

Name: \_\_\_\_\_

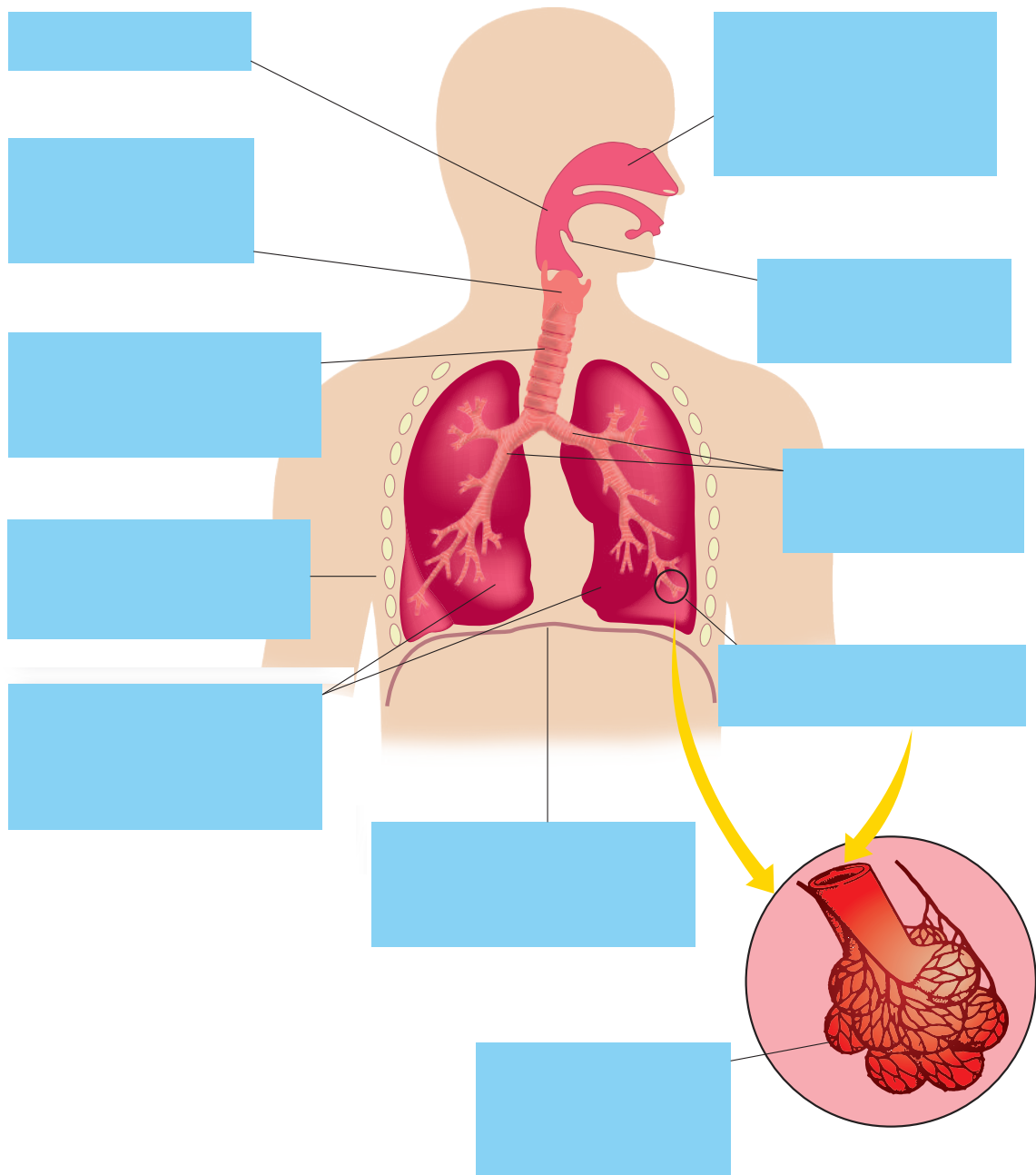
Class: \_\_\_\_\_

**WORKSHEET**

# 8.1 The respiratory system

Using the information in Chapter 8 of *Human Perspectives Units 1 & 2* and other sources available to you, complete the following activities.

- 1 Label the diagram of the respiratory system. In **green** pencil, trace the pathway of air coming into the lungs. In **blue** pencil, trace the pathway of air being expired out of the system.



- 2 Write a story about Ophelia the Oxygen Molecule, who starts her journey from the atmosphere, is breathed in through a person's nose and travels throughout the body to the cells. Explain in detail how Ophelia is transported from one environment to another, and what happens to her once she enters a cell. In your story, highlight the main 'places' that Ophelia visits.

3 Complete the table below to compare and contrast inspiration and expiration.

	Inspiration	Expiration
Pressure in lungs compared with outside environment		
Lung volume		
Diaphragm position		
Intercostal muscle movement		
Position of rib cage		